

NOTES:

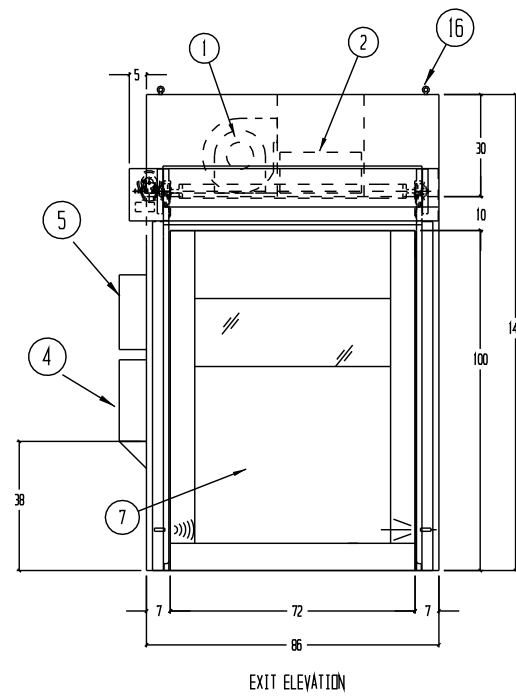
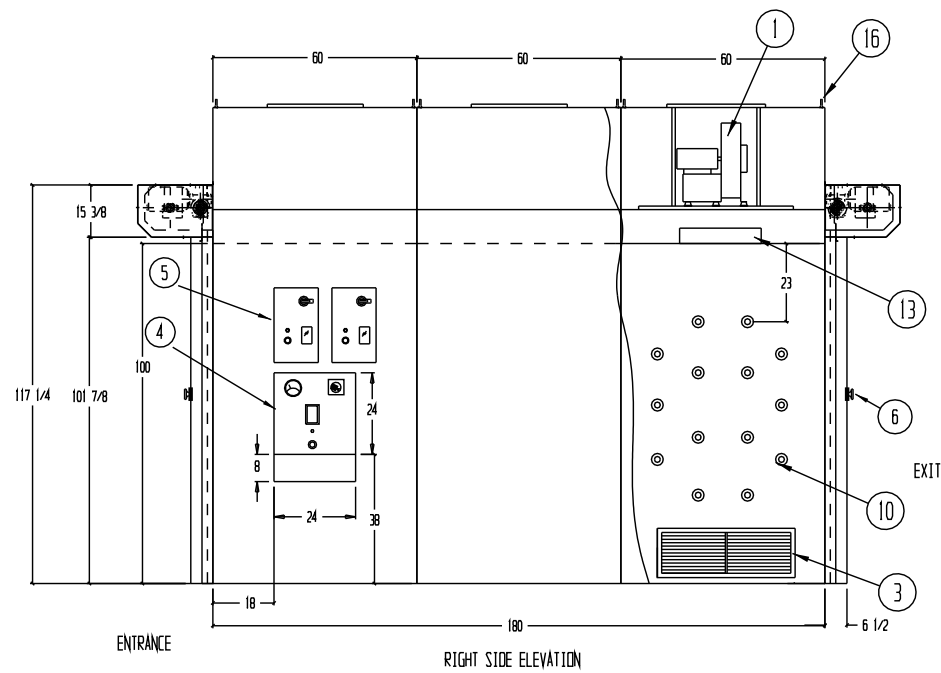
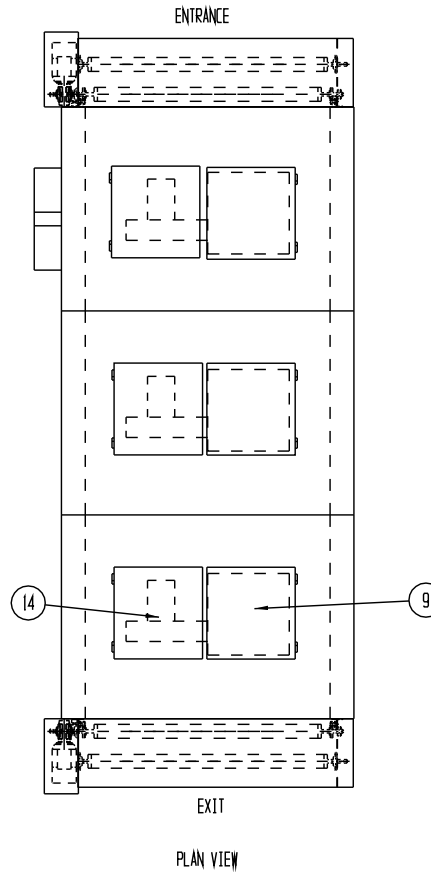
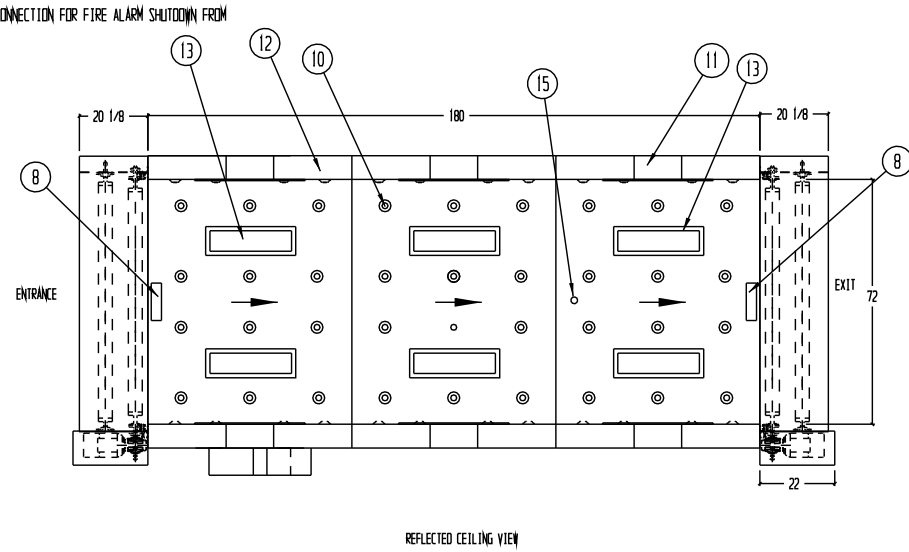
- INTERIOR & EXTERIOR CONSTRUCTED OF 16 GA. GALVANNEALED STEEL, PAINTED WHITE EPOXY
- ELECTRICAL WIRING TO CONFORM TO LATEST NEC STANDARDS
- CONTROLS ENCLOSURE TO BE LABELED PER UL508A
- AIR SHOWER POWER REQUIREMENT 460 VOLT, 3 PHASE, 60 HERTZ, 32.6 FULL LOAD AMPS
- RECOMMENDED MINIMUM BREAKER SIZE OF 60 AMPS
- UNIT TO MEET FEDERAL STANDARD 209B AND 209E FOR CLASS 100 DEVICES
- UNIT TO BE SHIPPED KNOCKED DOWN IN 12 PIECES WITH DOORS ASSEMBLIES SHIPPED LOOSE
- CLEAR DOOR @ 72" WIDE X 100" HIGH
- E-STOP WHEN DEPRESSED SHALL SHUTDOWN AIR SHOWER, OPEN BOTH DOORS AND SOUND AUDIBLE ALARM SYSTEM TO RESET WHEN E-STOP IS PULLED BACK OUT
- CONTROL BOX TO SHIP INSTALLED
- WALL NOZZLES TO START 23" DOWN FROM CEILING
- UNIT PROVIDED WITH TERMINAL CONNECTION FOR FIRE ALARM SHUTDOWN FROM FORM C CONTACT ( BY OTHERS)

| REVISIONS |                                 |          |          |
|-----------|---------------------------------|----------|----------|
| REV       | DESCRIPTION                     | DATE     | APPROVED |
| A         | CHANGES PER APPROVAL/ENG REVIEW | 11/27/13 |          |
| B         | AS-BUILT                        | 1/9/14   | SM       |

**IMPORTANT  
CUSTOMER TO CONFIRM:**

- CLEAR DOOR OPENINGS OF NO LESS THAN 63" WIDE FROM UNLOADING SITE TO INSTALLATION SITE

- 3 EA. DIRECT DRIVE MOTOR/BLOWER 5 H.P. 460V/ 3PH/ 60HZ 6.1 FLA, CAPABLE OF PRODUCING 1800 CFM AT 4" S.P.
- 3 EA. 24 X 24 X 1 1/2 V-BANK FILTER. 99.99% EFFICIENT ON PARTICLES OF 0.3 MICRONS AND LARGER
- 6 EA. 12 X 30 X 1" FLUSH PRE-FILTER GRILLS WITH 35% DISPOSABLE PRE-FILTERS
- CONTROL ENCLOSURE WITH MOTOR CONTROLS PLC AND TRANSFORMERS, DOOR MOUNT DISCONNECT SWITCH, MASTER E-STOP, EMERGENCY INDICATOR, AUDIBLE ALARM, INTERFACE PANEL & MAGNETIC GAUGE FOR HEPA
- 2 EA. ROLL UP DOOR CONTROL PANEL
- EMERGENCY STOP BUTTON (MUSHROOM TYPE 4 EA)
- HIGH SPEED ROLL-UP DOORS
- 2 EA. INFARED PRESENCE SENSORS
- HINGED SERVICE PANEL FOR HEPA FILTER CHANGE
- 120 EA. HIGH VELOCITY ADJUSTABLE PVC AIR NOZZLES
- RETURN AIR DUCTS
- SUPPLY AIR DUCTS
- 6 EA. FLUORESCENT LIGHT FIXTURE, WITH (2) 20W COOL WHITE LAMPS
- HINGED SERVICE PANELS FOR MOTOR
- SEALED SLEEVE FOR SPRINKLER, PIPE & HEAD BY OTHERS
- 1/2-13 EYE HOOKS FOR RIGGING TOP SECTIONS INTO PLACE



1 UNIT AS SHOWN  
TAG: FORK LIFT

|   |    |   |                 |                   |       |
|---|----|---|-----------------|-------------------|-------|
| DRAWN FOR                                 |    | <b>HALCO PRODUCTS CO.</b><br>100 NO. GORDON STREET ELK GROVE, IL. 60007 |                 |                   |       |
| AMERICAN FLUJI SEAL<br>JEFFERSONVILLE, IN |    | TITLE   |                 |                   |       |
|   |    | AIR SHOWER MODEL: AS6159-ST/PLC/AD/KD                                   |                 |                   |       |
| DRAWN BY                                  | TM | SIZE  | JOB NO. 13230-3 | DWG NO. 1017889BB | REV B |
| APPROVED BY                               |    | SCALE 3/16"=1'-0"   | DATE 10-9-13    | SHEET             |       |