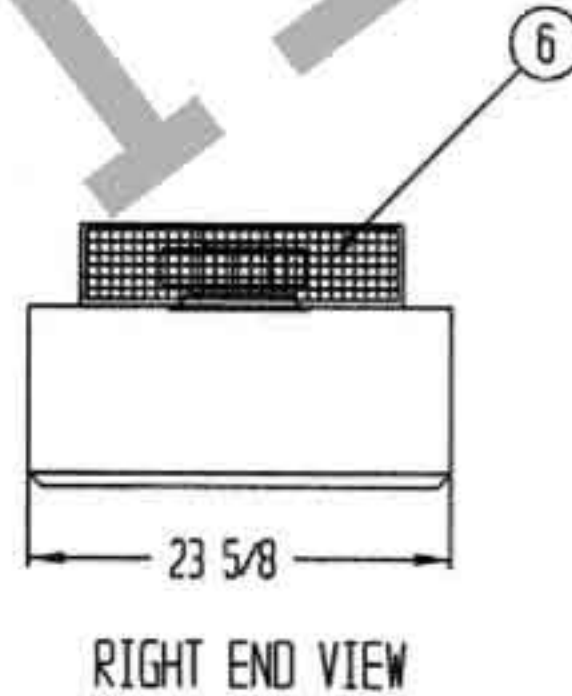
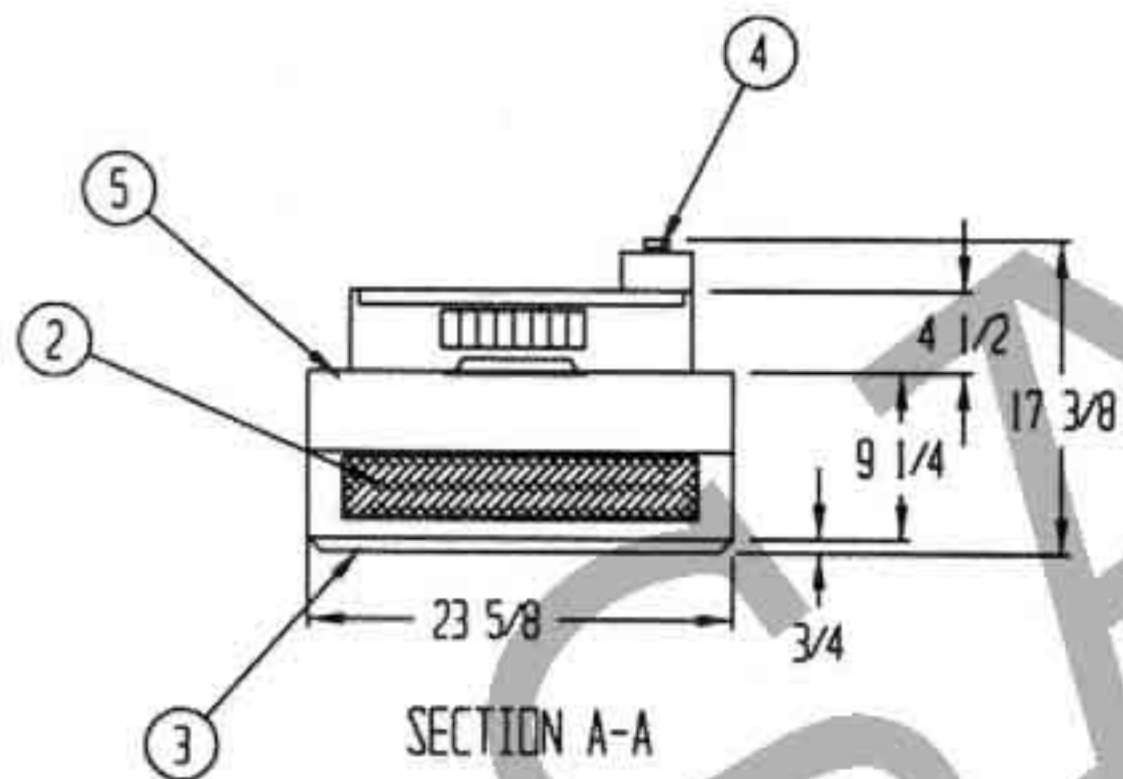
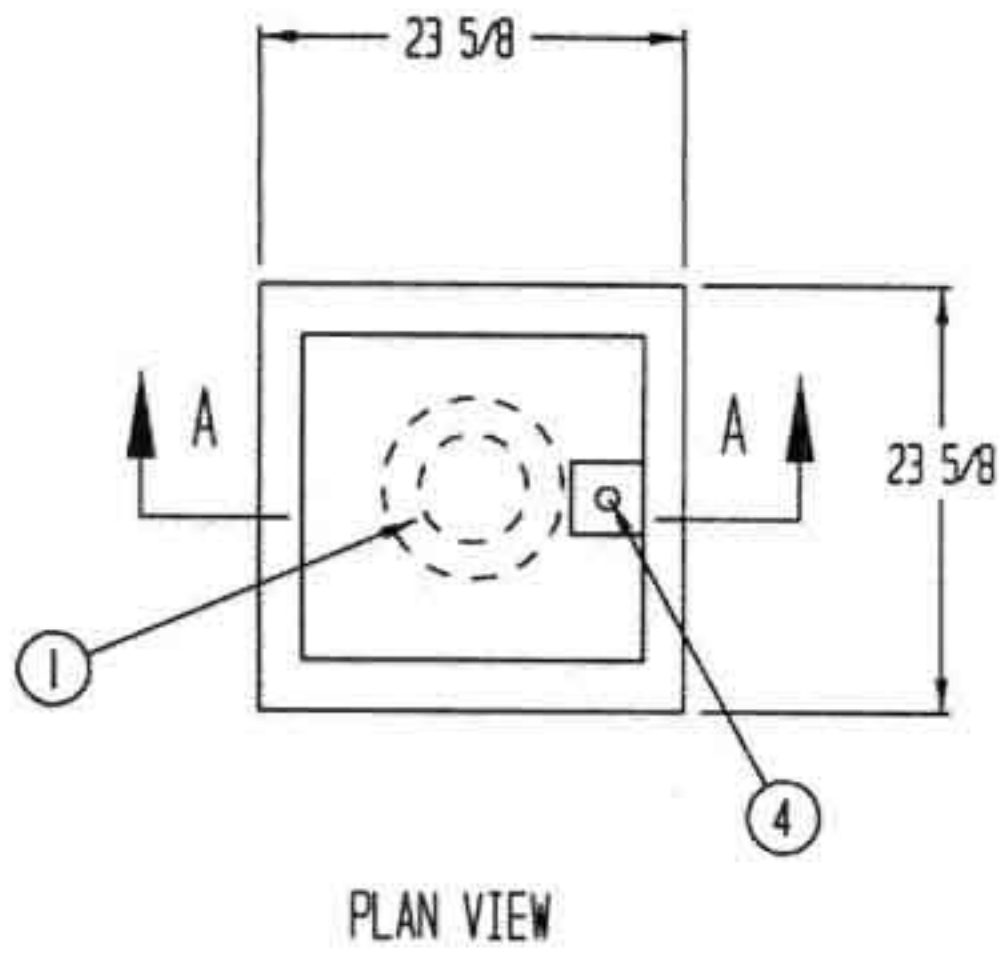


REV	DESCRIPTION	DATE	APPROVED

NOTES:

- UNIT TO BE CONSTRUCTED OF 16 GA. AND 14 GA. MILL FINISH ALUMINUM
- ELECTRICAL WIRING TO CONFORM TO NEC STANDARDS
- UNIT TO MEET ISO STANDARD 14644-1
- TOTAL CLEAN AIR CAPACITY, 280 CFM
- ALL HEPA FILTERS TO BE PSL TESTED
- CUSTOMER TO SUPPLY 115 VOLT, 1 PHASE, 60 CYCLE



LEGEND:

- ① 1 EA. BACKWARD CURVED IMPELLER, 115V, 60 HZ, 100W
- ② 1 EA. 19 3/4 X 19 3/4 X 3 1/2" THK. HEPA FILTER, 99.99% EFFICIENT ON PARTICLE OF 0.3 MICRON SIZE
- ③ 40% OPEN ANODIZED ALUMINUM PERFORATED GRILL
- ④ ELECTRICAL JUNCTION BOX WITH ELECTRONIC SPEED CONTROL
- ⑤ SOUND ABSORBING INSULATION
- ⑥ PERFORATED 16 GA. ALUMINUM SCREEN ON 2 SIDES

DRAWN FOR		HALCO PRODUCTS CO.			
		100 NO. GORDON STREET ELK GROVE, IL. 60007			
		TITLE CEILING MODULE - FT2424-LD/AL/RF			
DRAWN BY	DK	SIZE	JOB NO. SG899	DWG NO.	1715213A0
					REV