



# HALCO PRODUCTS COMPANY

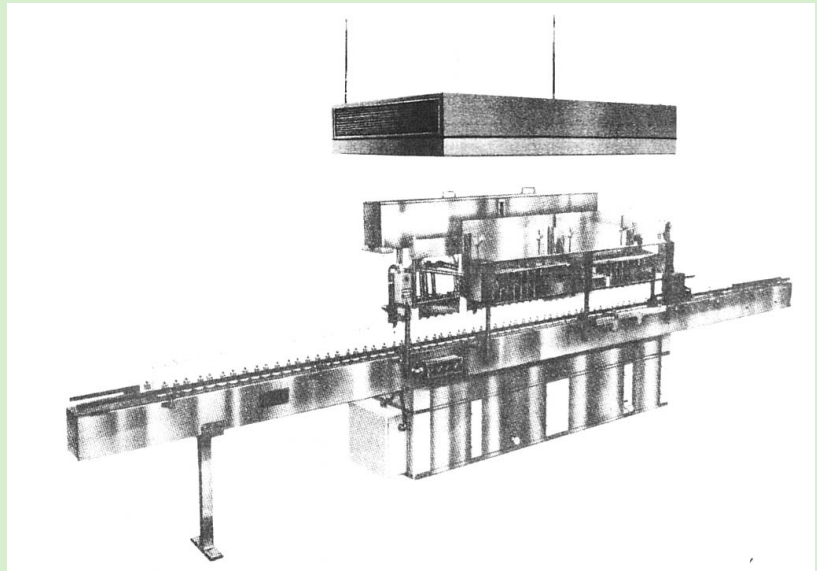
100 N. Gordon Street - Elk Grove Village, IL 60007-1193  
Tel: 847-956-1600 - Fax: 847-956-0595  
E-Mail: Info@Halco-Products.com  
Website: www.Halco-Products.com



## VERTICAL DOWNFLOW HANGING MODULE

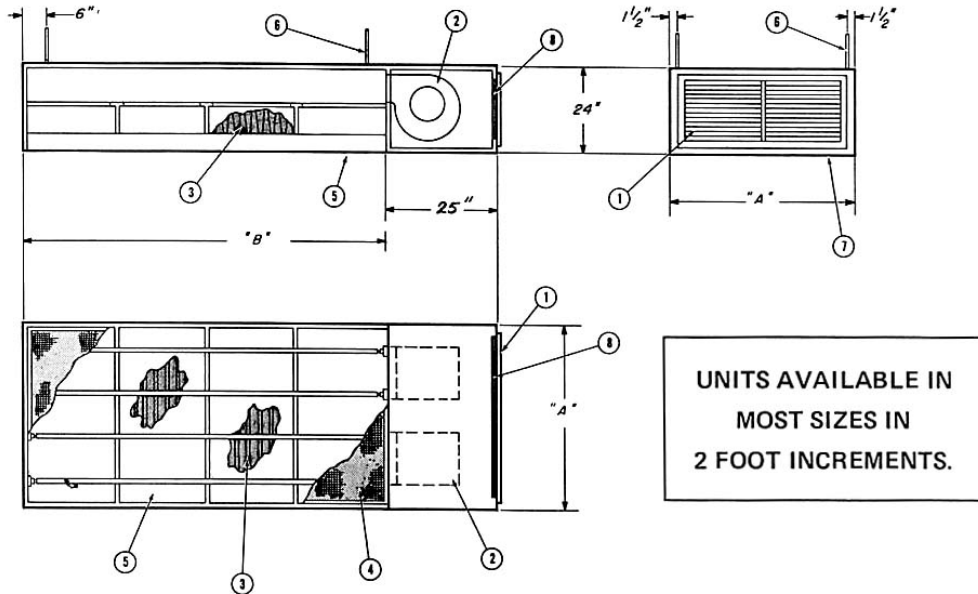
This ceiling module is a compromise between an individual downflow bench and a laminar downflow clean room. The Ceiling Module can be hung or suspended from any existing ceiling using standard threaded support rods, legs providing unobstructed passage under the unit. Machinery and personnel can then be easily set up under the unit for production or assembly.

The unit is entirely self contained and delivered ready for operation. Motor, blowers and HEPA filters are mounted for easy access. Fluorescent lighting is designed into each unit to allow ample supply of illumination within the work area.



MODEL NO.	NOMINAL HEPA AREA		CFM
	A	B	
VFM-26	24"	72"	1200
VFM-28	24"	96"	1600
VFM-36	36"	72"	1800
VFM-38	36"	96"	2400
VFM-46	48"	72"	2400
VFM-48	48"	96"	3200
VFM-410	48"	120"	4000
VFM-56	60"	72"	3000
VFM-58	60"	96"	4000
VFM-510	60"	120"	5000
VFM-66	72"	72"	3600
VFM-68	72"	96"	4800
VFM-610	72"	120"	6000

# SPECIFICATIONS



UNITS AVAILABLE IN MOST SIZES IN 2 FOOT INCREMENTS.

**TYPICAL COMPONENTS:**

- 1. Air inlet grille
- 2. Shock-mounted blower assembly
- 3. HEPA filter
- 4. Removable plastic eggcrate grille
- 5. Fluorescent lighting
- 6. 1/2" Threaded hanging rods
- 7. Module housing
- 8. Disposable prefilter
- 9. Hi-density particle board cabinet with high pressure laminate. Units can be bolted together to meet special requirements

**OPTIONAL EQUIPMENT:**

- 20 MIL Vinyl Curtains & Track
- Magnehelic Gauge
- 3 Phase Motors
- Motor/Blower on Top
- Steel Construction, Epoxy Painted
- 4304 Stainless Steel Construction

**FILTERS**

HEPA filters are 99.97% efficient on 0.3 micron size particles. Filter replacement takes place from below. Fluorescent fixtures are designed for quick disconnection and easy access.

**VELOCITY:**

Multiple speed motors are adjusted to maintain an air flow velocity of 100 FPM.

**ELECTRICAL:**

Available in 208,240, or 480 volt 3 phase, 60 cycle or as specified. Meets all local electrical codes.

**LIGHTING:**

Light level is a minimum of 100 FC at work height.

**NOISE LEVEL:**

Rated at less than 70 db on The A scale.

**HALCO PRODUCTS COMPANY**  
 100 North Gordon Street  
 Elk Grove Village, Illinois 60007-1193  
 (847) 956-1600 Fax (847) 956-0595  
 E-Mail: Info@Halco-Products.com  
 Website: www.Halco-Products.com

In line with our policy of continual product improvement, HALCO reserves the right to incorporate and use equipment and material to conform with the latest design of its products, and in keeping with the specifications of this equipment.