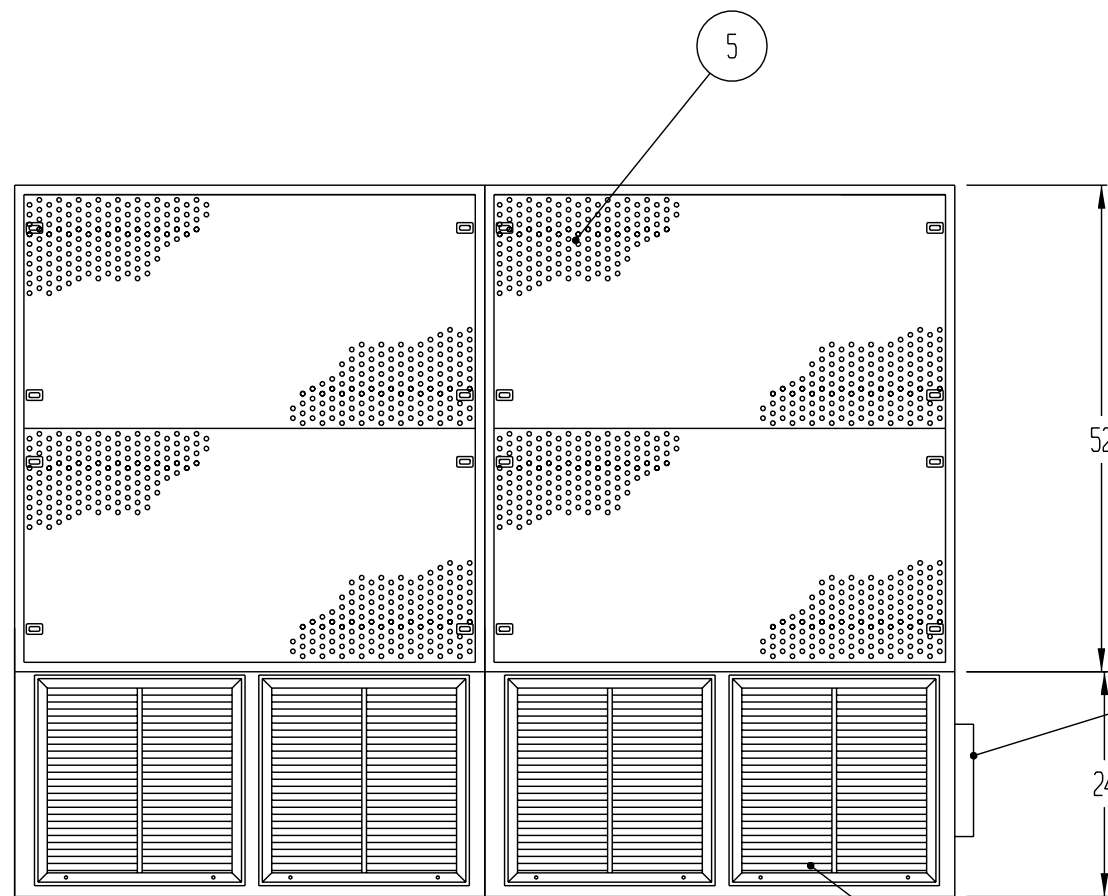


TOP VIEW

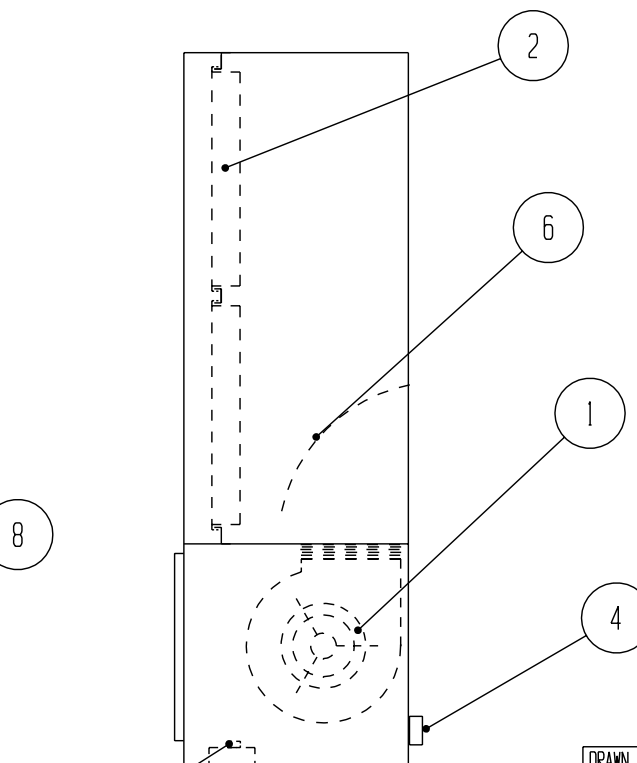
NOTE:

- CONSTRUCTION TO BE 16 GA. WHITE EPOXY PAINTED STEEL
- UNIT TO MEET ISO 14644-1, CLASS 3, FOR CLASS 100 DEVICES
- ELECTRICAL WIRING TO CONFORM TO LATEST NEC STANDARDS
- ELECTRICAL REQUIREMENT: MOTOR/BLOWER 240V, THREE PHASE, 3.5 FLA
- UNIT SHIPS ASSEMBLED WITH FILTERS LOOSE
- BLOWER BOX LINED W/ 1/2" THICK FOAM SOUND DEAFENING

REVISIONS			
REV	DESCRIPTION	DATE	APPROVED



FRONT VIEW



SIDE VIEW

- ① 1 EA. DD10-10AC DIRECT DRIVE MOTOR/BLOWERS, 3/4HP, 240V, 60HZ, 3.5 FLA, . CAPABLE OF PRODUCING 1800 CFM TOTAL AT 1.2" S.P., CONTROLLED WITH VFD SPEED CONTROL
- ② 2 EA. 24" X 48"X 3-1/2" ALUMINUM FRAMED HEPA FILTERS, 99.99% EFFICIENT ON PARTICLES OF 0.3 MICRONS AND LARGER (GEL SEAL REPLACABLE FROM FRONT)
- ③ 2 EA. 20 X 20 X 1" THK DISPOSABLE PLEATED PRE-FILTERS MOUNTED IN ANODIZED ALUMINUM GRILLES
- ④ ELECTRICAL JUNCTION BOX FOR MOTORS
- ⑤ PERFORATED ANODIZED ALUMINUM PROTECTIVE SCREEN
- ⑥ PERFORATED ALUMINUM DIFFUSER PLATE
- ⑦ SPEED CONTROLS
- ⑧ 12" DUCT CONNECTION ON (1) UNIT

(2) EACH JOINED AS SHOWN

DRAWN FOR		<b>HALCO PRODUCTS CO.</b>			
		100 NO. GORDON STREET ELK GROVE, IL. 60007			
		TITLE HORIZONTAL FILTER MODULE - HFM 44 ST/SP			
DRAWN BY	TM	SIZE	JOB NO. 11460	DWG NO. 1414071B0	REV
APPROVED BY		SCALE 1/2"=1'-0"	DATE 7-5-06	SHEET	