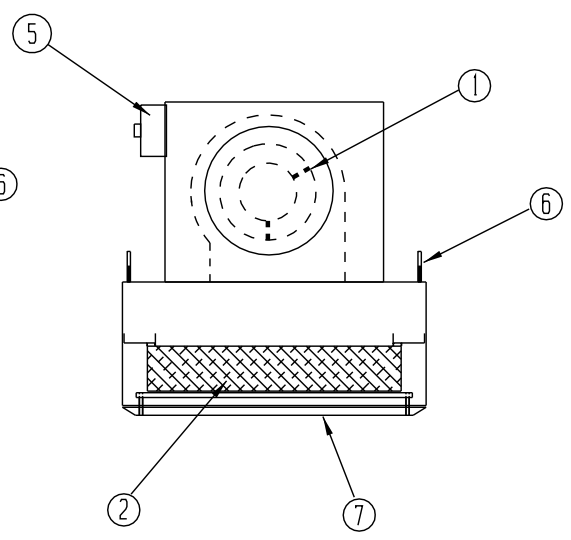
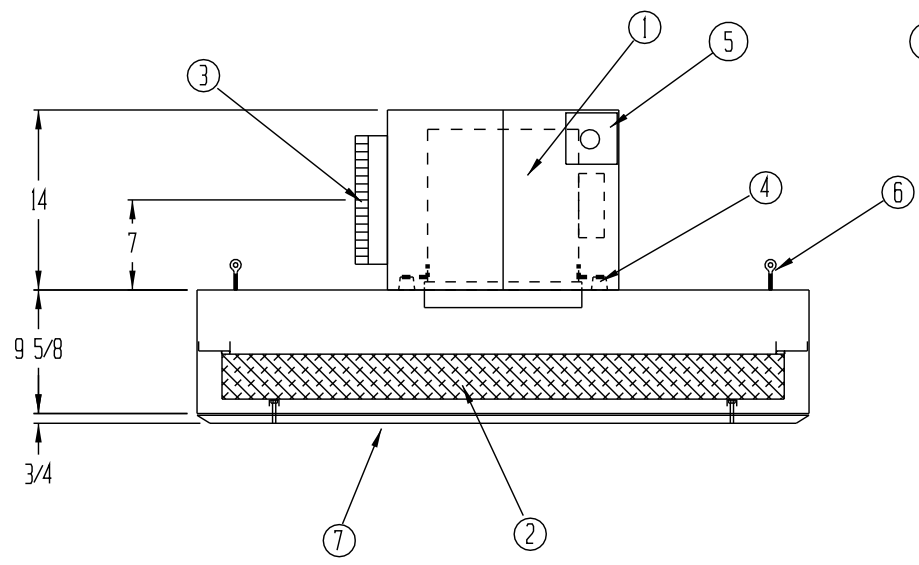
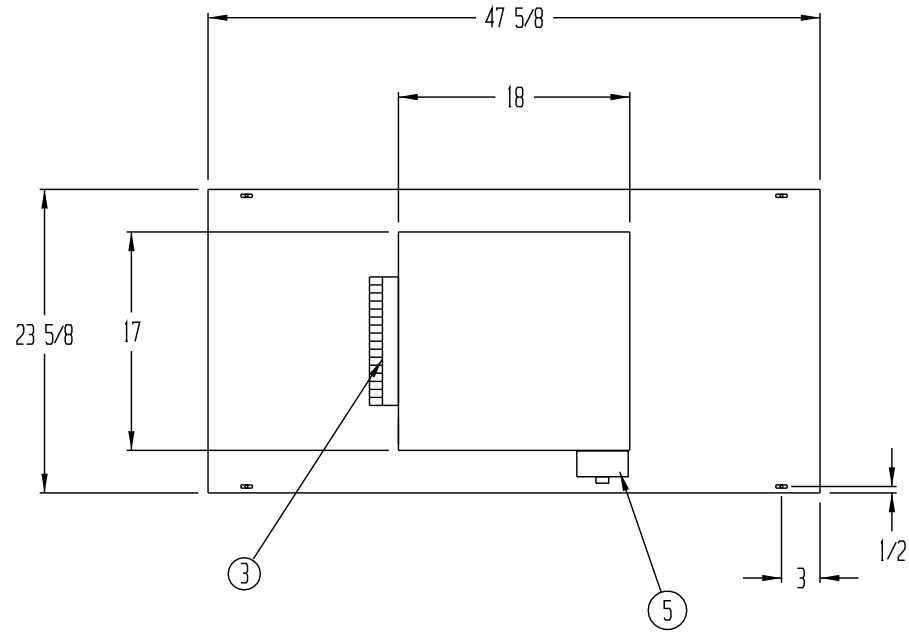


REV	DESCRIPTION	DATE	APPROVED

NOTE:

- HEPA FILTER REPLACED FROM BELOW WITHOUT DISTURBING CEILING OR HOUSING
- ELECTRICAL WIRING TO CONFORM TO LATEST NEC STANDARDS
- UNIT TO MEET ISO STANDARD 14644-1 (FED STD 209B AND 209E FOR CLASS 100 DEVICES)
- UNIT OPERATING WEIGHT 85 LBS.
- ELECTRICAL REQUIREMENTS: 120 VOLT, 60 HZ, 4.6 FLA



- ① 1 EA. 9-9A DIRECT DRIVE BLOWER WITH 1/3 H.P. MOTOR. CAPABLE OF PRODUCING 600 CFM @ .55" INITIAL HEPA FILTER STATIC PRESSURE
- ② 1 EA. 19 3/4 x 43 3/4 x 3 1/2" HEPA FILTER 99.99% EFFECTIVE ON PARTICLES OF 0.3 MICRON SIZE OR LARGER
- ③ 1 EA. 12" DIA STARTER COLLAR
- ④ 4 EA. MOTOR/BLOWER VIBRATION ISOLATORS
- ⑤ ELECTRONIC VARIABLE MOTOR SPEED CONTROL
- ⑥ 4 EA. EYEBOLT HANGING SUPPORTS
- ⑦ ANODIZED ALUMINUM PROTECTIVE GRILLE WITH 1/8" DIA. HOLE ON 3/16" STAGGERED CENTERS PROVIDING AN OPEN AREA OF 40%.

CONSTRUCTION:

- HOUSING CONSTRUCTED OF 14 GA. 3003-H14 MILL ALUMINUM
- ASSEMBLED WITH INSIDE TURNED FLANGES, CAULKED AND RIVETED

DRAWN FOR		HALCO PRODUCTS CO. 100 NO. GORDON STREET ELK GROVE, IL. 60007				
BLILEY TECHNOLOGIES ERIE, PA						TITLE
DRAWN BY	TM	SIZE	JOB NO. -----	DWG NO.	1716900A0	REV
APPROVED BY		SCALE	N/A	DATE	9-21-11	