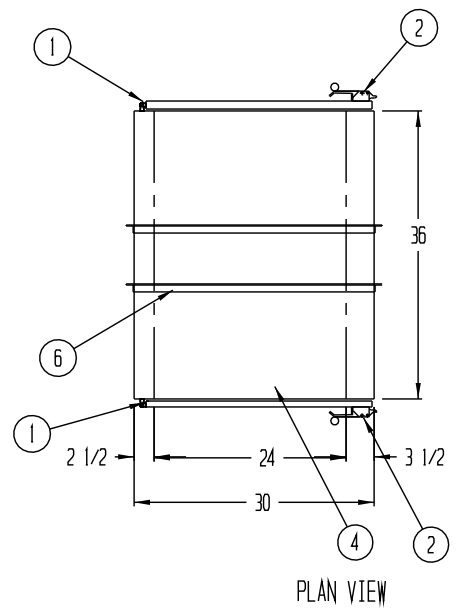


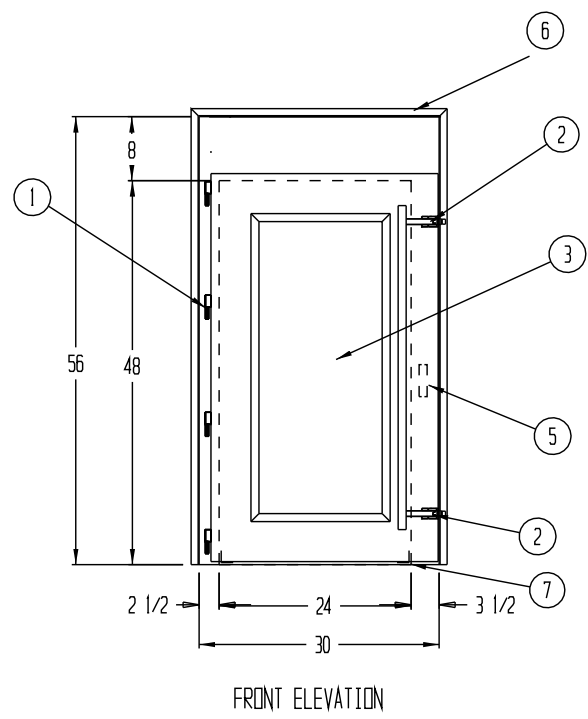
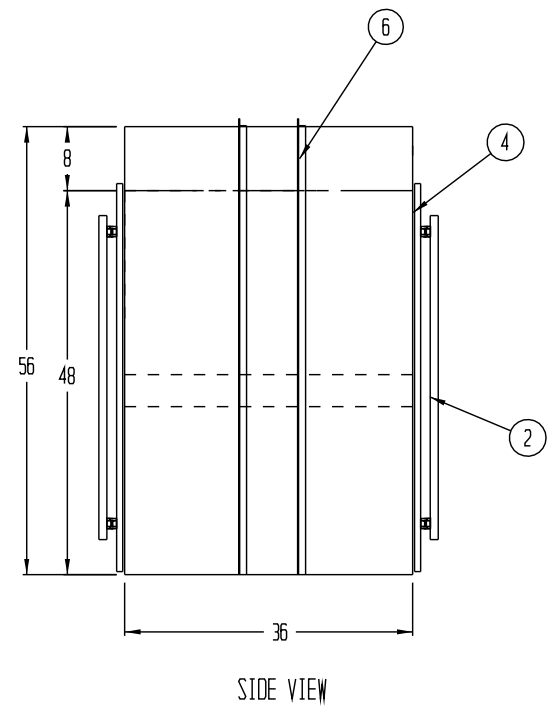
REVISIONS			
REV	DESCRIPTION	DATE	APPROVED

NOTES:

- UNIT TO BE CONSTRUCTED OF 16 GA. TYPE 304 STAINLESS STEEL WITH A #4 FINISH
- MOUNTING ANGLE TO BE 1-1/2" X 1-1/2" X 16 GA. TYPE 304 STAINLESS STEEL SHIPPED LOOSE FOR FIELD INSTALL BY OTHERS
- UNIT TO HAVE MECHANICAL DOOR INTERLOCKING SYSTEM
- ROUGH OPENING SIZE SHOULD BE 1/4" LARGER THAN UNIT SIZE
- DOOR SWEEPS PROVIDED BUT SHIPPED LOOSE FOR FIELD INSTALL BY OTHERS



- ① STAINLESS STEEL PIN HINGES
- ② DUAL STAINLESS STEEL COMPRESSION LATCHES WITH COMMON PULL BAR
- ③ 1/4" CLEAR TEMPERED GLASS GLAZING
- ④ EPDM GASKET
- ⑤ MECHANICAL DOOR INTERLOCK SYSTEM
- ⑥ 1-1/2" X 1-1/2" X 16 GA WELDED 316L STAINLESS STEEL FINISHING TRIMS
- ⑦ 1 1/2 X 16 GA FLOOR MOUNTING ANGLES ON INTERIOR WALLS



1 UNIT REQUIRED AS SHOWN

DRAWN FOR NYCOM INC. C/O UNC LINEBERGER		HALCO PRODUCTS COMPANY 100 NO. GORDON STREET ELK GROVE, IL. 60007 TITLE CPT2448-36/SS/MI		
DRAWN BY DK	SIZE JOB NO. 15398	DWG NO. 1524010B0	REV	
APPROVED BY	SCALE 1/2" = 1'-0"	DATE 7/12/21	REF JOB: 14886	