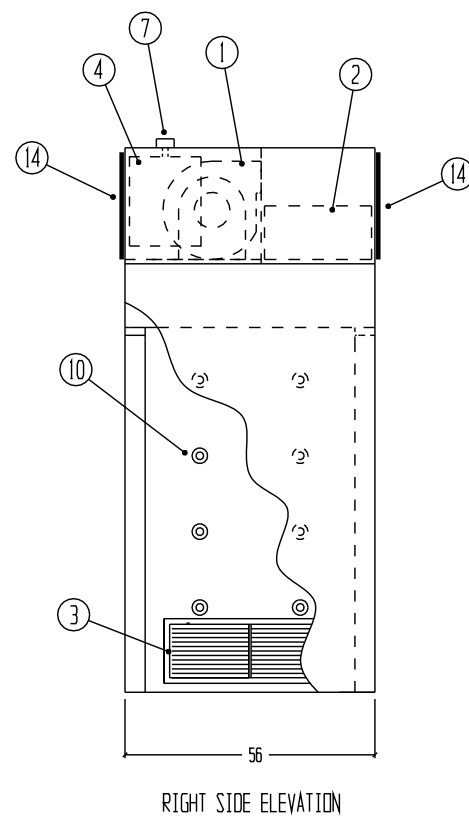
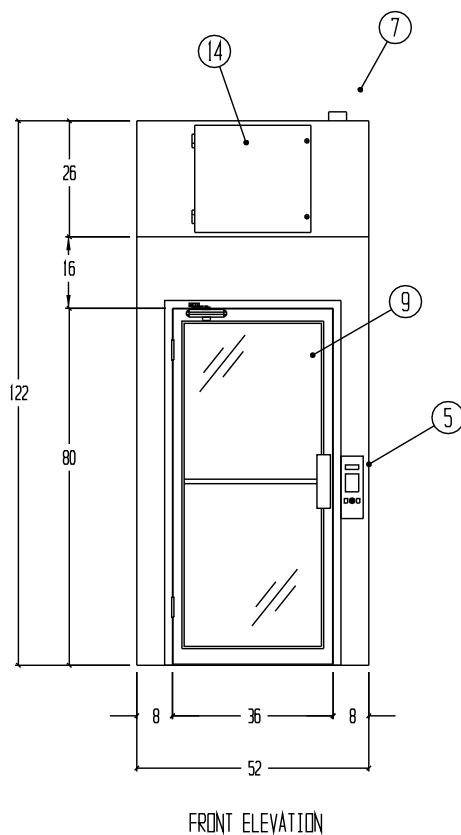
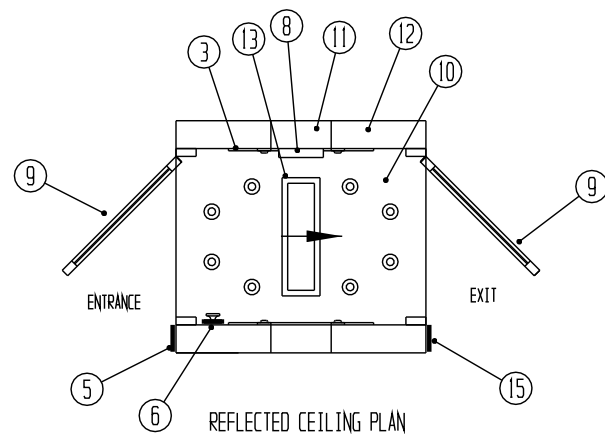
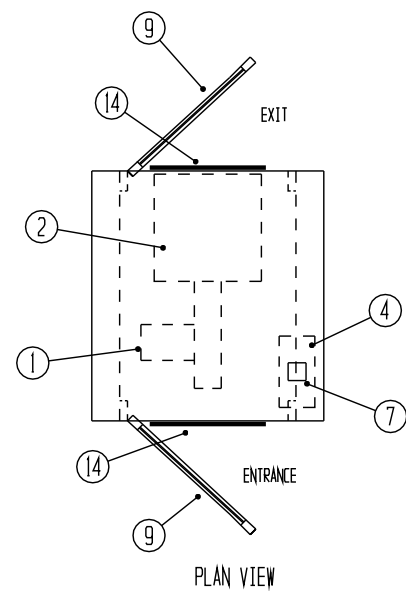


REVISIONS			
REV	DESCRIPTION	DATE	APPROVED



NOTES:

- CONSTRUCTION TO BE 3/4" HIGH DENSITY PARTICLE BOARD
- EXTERIOR COVERED WITH WHITE HIGH PRESSURE PLASTIC LAMINATE
- INTERIOR COVERED WITH WHITE KYDEX
- ELECTRICAL WIRING TO CONFORM TO LATEST NEC STANDARDS 460V /3 PH/60HZ 3.6 FLA ELECTRICAL SERVICE
- UNIT TO MEET ISO STANDARD 14644-1 AND FED. STD. 209E FOR CLASS 100 DEVICES
- UNIT TO BE SHIPPED TWO PIECES (1 BASE SECTION AND 1 BLOWER SECTION)
- NO FLOOR

**IMPORTANT
CUSTOMER TO CONFIRM:**

- DOOR SIZES AND DIRECTION OF SWING
- ENTRANCE AND EXIT SIDES AND DIRECTION OF OPERATION
- SERVICE ACCESS PANEL LOCATION
- AVAILABILITY OF ELECTRICAL SERVICE REQUIRED
- ELECTRICAL SERVICE CONNECTION POINT
- OVERALL SIZE OF UNIT OR SECTIONS
- CLEAR DOOR OPENINGS OF NO LESS THAN 54" WIDE FROM UNLOADING SITE TO INSTALLATION SITE

- ① 1 EA. DIRECT DRIVE MOTOR/BLOWER 3 H.P. 460V/ 3PH/ 60HZ, CAPABLE OF PRODUCING 1100 CFM AT 4" S.P.
- ② 1 EA. 18 X 24 X 11 1/2 HEPA FILTER. 99.99% EFFICIENT ON PARTICLES OF 0.3 MICRONS AND LARGER
- ③ 2 EA. 30 X 12 X 1" ANODIZED ALUMINUM PRE-FILTER GRILLES WITH 35% EFFICIENT DISPOSABLE PRE-FILTERS
- ④ ELECTRONIC CONTROLS ENCLOSURE
- ⑤ MICROPROCESSOR CONTROL PANEL WITH LCD DISPLAY, MEMBRANE TYPE KEYPAD, AUDIBLE ALARM, LIGHT SWITCH, AND SYSTEM RESET BUTTON
- ⑥ EMERGENCY STOP BUTTON
- ⑦ ELECTRICAL JUNCTION BOX FOR CUSTOMER CONNECTION
- ⑧ ACTIVE INFRARED PRESENCE SENSOR
- ⑨ ANODIZED ALUMINUM NARROW STILE DOORS AND FRAMES WITH 1/4" ACRYLIC INSERTS
- ⑩ 24 EA. HIGH VELOCITY ADJUSTABLE AIR NOZZLES
- ⑪ RETURN AIR DUCTS
- ⑫ SUPPLY AIR DUCTS
- ⑬ 1 EA. FLUORESCENT LIGHT FIXTURE, CAPABLE OF PRODUCING 60 FC AT 40" AFF
- ⑭ HINGED SERVICE PANELS
- ⑮ ACCESS PLATE FOR ELECTRIC LOCK

DRAWN FOR SHARP ELECTRONICS ROMEOVILLE, IL DYNAMIC HEATING	HALCO PRODUCTS CO. 100 NO. GORDON STREET ELK GROVE, IL. 60007			
	TITLE AIR SHOWER MODEL AS347-NF/SP			
DRAWN BY TM	SIZE	JOB NO. ----	DWG NO. 1014450BA	REV
APPROVED BY	SCALE 1/4" = 1' - 0"	DATE 4-23-07	SHEET	