



HALCO PRODUCTS COMPANY

100 N. Gordon Street - Elk Grove Village, IL 60007-1193

Tel: 847-956-1600 - Fax: 847-956-0595

E-Mail: Info@Halco-Products.com

Website: www.Halco-Products.com

HALCO
PRODUCT
INFORMATION

400.6100

HEPA FILTER BLOWER MODULES ECM—HIGH CAPACITY FT24-M

MICROPROCESSOR SPEED CONTROL



HALCO ECM Ceiling Modules fit all standard 2' X 2' and 2' x 4' T-Bar systems. All units are factory sealed and certified, ready for installation. Modules are supplied with a HEPA Filter. Pack sizes 2", 2.75", HEPA and ULPA, gasket or Gel seal. Other sizes available.

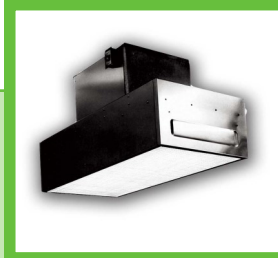
FT24-M CEILING MODULE

The FT24-M has a self-contained 1/3, 1/2, or 3/4 H.P. direct drive motor blower ECM. Units may be hung free style or be used to overcome any pressure drop problems which may occur within your existing air system.

PREMIUM FLOW CONTROL



**FT Blower
With Lights Also Available!**



Available Options

- Electronic Speed Control (Mounted or Remote)
- Motor Running Light
- Plugged Power Cord
- Room Side Replaceable Filter
- ULPA Filters
- ECM Motors (Included)
- Integrated Centralized Control and Monitoring System
- Insulated Housings
- Dedicated Aerosol Injection Port Room Side Accessible
- Optional Voltages
- Stainless Construction
- Reverse Flow Design
- High Flow / Static Design
- Explosion Resistant Construction

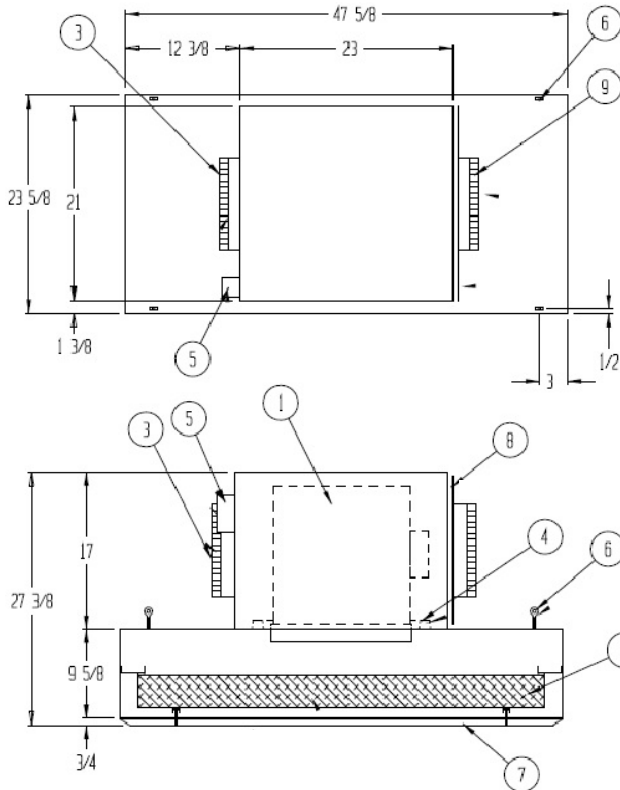
**CONTROL
PANEL**



SPECIFICATIONS



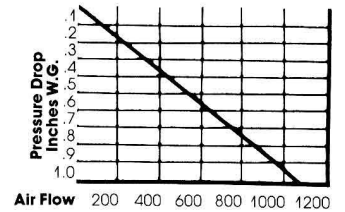
ECM Motor



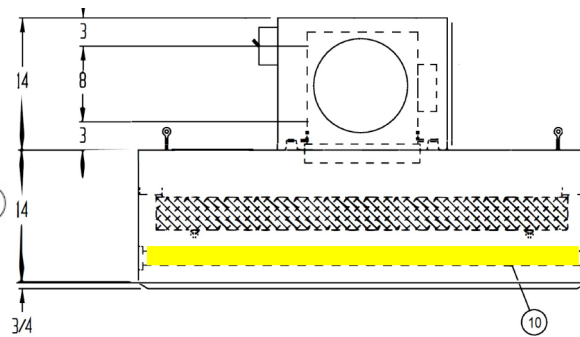
NOTE:

- HEPA FILTER REPLACED FROM BELOW WITHOUT DISTURBING CEILING OR HOUSING
- ELECTRICAL WIRING TO CONFORM TO LATEST NEC STANDARDS
- UNIT TO MEET FEDERAL STANDARD 209B AND 209E FOR CLASS 100 DEVICES
- UNIT OPERATING WEIGHT 85 LBS.
- ELECTRICAL REQUIREMENTS: 115 VOLT, 60 HZ., 7.1 FLA
- HOUSING CONSTRUCTED OF 14 GA. 3003-H14 MILL ALUMINUM
- ASSEMBLED WITH INSIDE TURNED FLANGES, CALKED AND BOLTED

INITIAL RESISTANCE VS. AIR FLOW - CFM

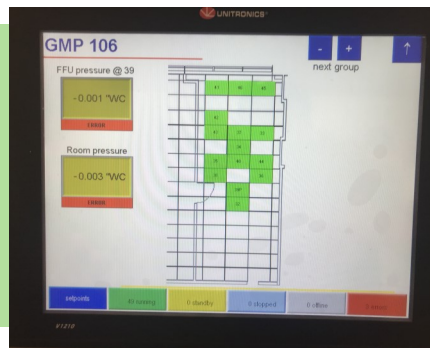
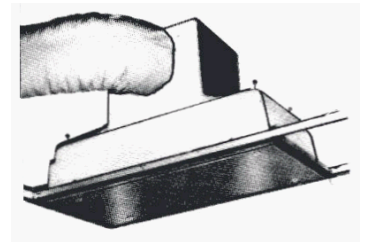


Optional Lights



- ① 1 EA. 10-10A DIRECT DRIVE BLOWER WITH 1/2 H.P. ECM MOTOR. CAPABLE OF PRODUCING 800 CFM @ .55" INITIAL HEPA FILTER STATIC PRESSURE
- ② 1 EA. 19 3/4 X 43 3/4 X 3 1/2" ANODIZED ALUMINUM FRAMED HEPA FILTER, 99.99% EFFECTIVE ON PARTICLES OF 0.3 MICRONS AND LARGER - GASKET SEAL
- ③ 1 EA. 12" DIA STARTER COLLARS
- ④ 4 EA. MOTOR/BLOWER VIBRATION ISOLATORS
- ⑤ ELECTRONIC SPEED CONTROL
- ⑥ 4 EA. EYEBOLT HANGING SUPPORTS
- ⑦ ANODIZED ALUMINUM PROTECTIVE GRILLE WITH 1/8" DIA. HOLE ON 3/16" STAGGERED CENTERS PROVIDING AN OPEN AREA OF 40%.
- ⑧ MOTOR/BLOWER ACCESS PANEL
- ⑨ 1 EA. 10" DIA STARTER COLLAR

CONTROL SYSTEM LAYOUT



Basic Speed Control



HALCO PRODUCTS COMPANY

100 N. Gordon Street - Elk Grove Village, IL 60007-1193
 Tel: 847-956-1600 - Fax: 847-956-0595
 E-Mail: Info@Halco-Products.com
 Website: www.Halco-Products.com