



HALCO PRODUCTS COMPANY

100 N. Gordon Street - Elk Grove Village, IL 60007-1193

Tel: 847-956-1600 - Fax: 847-956-0595

E-Mail: Info@Halco-Products.com

Website: www.Halco-Products.com

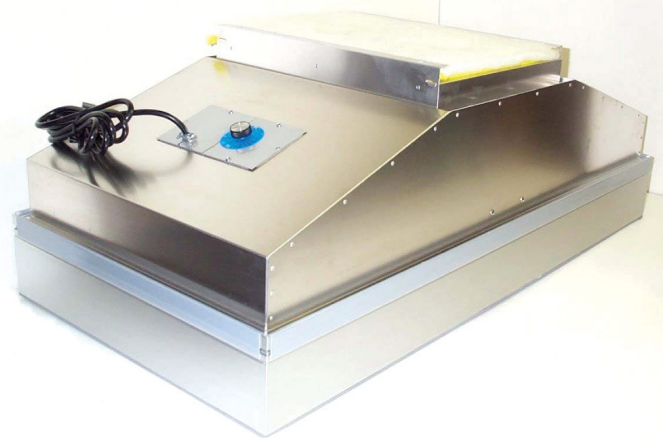
HALCO
PRODUCT
INFORMATION

400.4001

HEPA FILTER BLOWER MODULES AT-2000

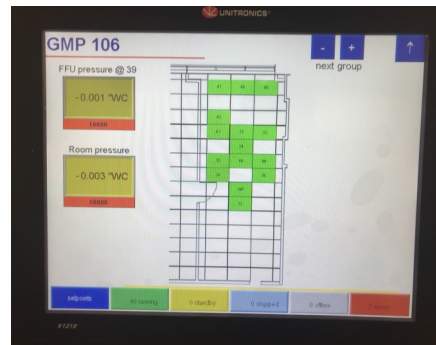
Halco Products AT-2000 fan filter modules are designed to be integrated into standard or cleanroom ceiling systems. The motorized impeller provides a low profile with larger centrifugal blowers, capable of handling an additional .125" WG ESP. The filter element is individually scan tested to ensure leak free operation. HEPA filters are available in 95%, 99.99%, & 99.9995% (ISO 15E to 65E) efficiencies and varying filter pack depths. The standard unit is available in nominal 2' x 4' or 2' x 2'. Custom sizes are available. The unit is provided with an integral white powder painted expanded metal face screen as standard. Optional perforated, expanded stainless steel, or perforated anodized aluminum are available. Each unit comes with a variable speed control accessible by either room side or from above, also option of disposable pre filter or duct collar. The unit is sized to deliver 720 cfm to twice the initial static pressure of the clean HEPA filter. The AT-2000 is also available with a room side replaceable filter element that uses an up-stream gel seal to ensure a positive seal.

The Halco HEPA filter blower module provides energy efficient powered clean room level air filtration. Optional ECM motors provide higher levels of efficiency and the capability of integrating into a centralized control panel operational and monitoring system.



Available Options

- Room Side Accessible Speed Control
- Motor Running Light
- Plugged Power Cord
- Room Side Replaceable Filter
- ULPA Filters
- ECM Motors
- Integrated Centralized Control and Monitoring System
- Insulated Housings
- Dedicated Aerosol Injection Port Room Side Accessible
- Optional Voltages
- Stainless Construction



SPECIFICATIONS



2' x 4' Module AT2000-34

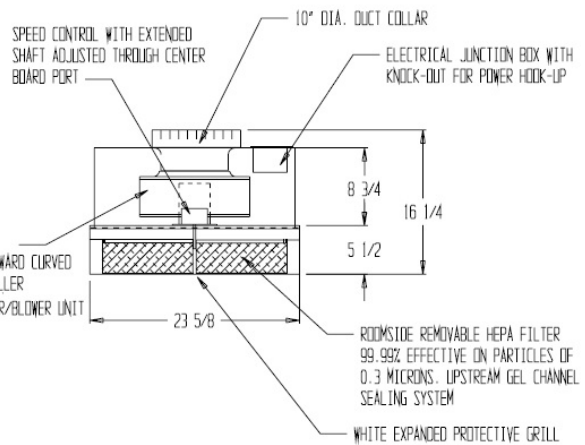
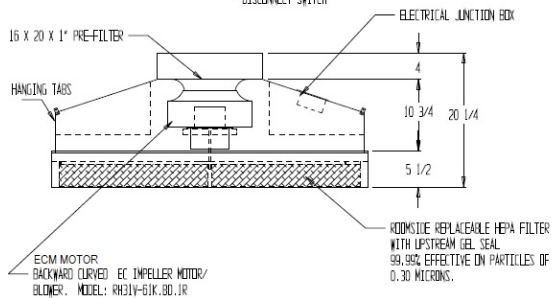
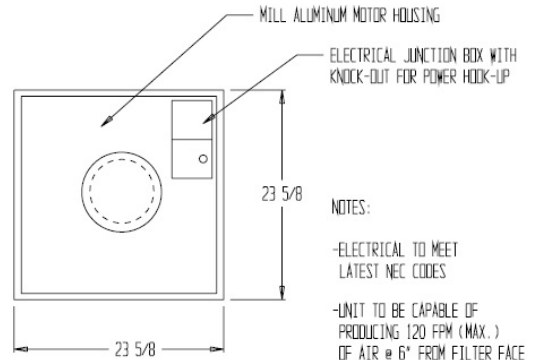
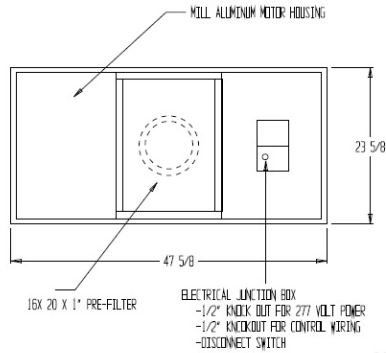
2' x 2' Module AT2000-44

NOTES:

- HANGER TABS
- ELECTRICAL TO MEET LATEST NEC CODES
- ELECTRICAL REQUIREMENT: 277 VOLT, 1 PHASE, 60 HZ., 1.35 FLA
- HEPA FILTER TO HAVE AN EFFECTIVE AREA OF 5.62 SF OF MEDIA WITH A PACK DEPTH OF 70 MM
- AIR VELOCITY OF 90 FPM MEASURED BY FROM FILTER FACE WILL YIELD 507 CFM WITH A MAXIMUM OF 700 CFM AT HIGH SPEED MEASURED WITH A FLOW HOOD.
- INDEPENDENT LAB TESTING SHOWS A SOUND LEVEL OF 61 DBA AT 90 FPM MEASURED 30" BELOW FILTER WITH A STATIC PRESSURE OF .54" WG.
- UNIT WEIGHT 70 LBS.
- SOUND ABSORBING INSULATION
- 2 WIRE MODBUS CONTROL WIRING (FIELD WIRING BY OTHERS)

NOTES:

- ELECTRICAL TO MEET LATEST NEC CODES
- UNIT TO BE CAPABLE OF PRODUCING 120 FPM (MAX.) OF AIR @ 6" FROM FILTER FACE
- MOTOR VOLTAGE 277V, 0.6FLA



DIMENSIONS FOR STANDARD UNITS:

2' x 4', 2' x 2', 2' x 3' and custom sizes available

COMPONENTS:

- 1) Backward Curved impeller motor/blower
- 2) Brushed aluminum housing
- 3) Variable Speed Control
- 4) Anodized aluminum HEPA, ULPA filter
- 5) Duct collar or pre-filter
- 6) Power cord or junction box

NOISE LEVEL:

Rated at less than 60db on the A scale

FILTERS:

HEPA: 99.99% efficient class 100 (ISO class 5)
 ULPA: 99.9995% efficient class 10 (ISO class 4)

VELOCITY:

Variable speed control can be adjusted to maintain an air flow velocity of 90-100 FPM

ELECTRICAL:

120/1/60 Standard
 Optional: 220 or 277, 1 phase



AT-2000-1 with duct collar

HALCO PRODUCTS COMPANY

100 North Gordon Street
 Elk Grove Village, Illinois 60007-1193
 (847) 956-1600 Fax (847) 956-0595
 E-Mail: Info@Halco-Products.com
 Website: www.Halco-Products.com

In line with our policy of continual product improvement, HALCO reserves the right to incorporate and use equipment and material to conform with the latest design of its products, and in keeping with the specifications of this equipment.