



HALCO PRODUCTS COMPANY

100 N. Gordon Street - Elk Grove Village, IL 60007-1193

Tel: 847-956-1600 - Fax: 847-956-0595

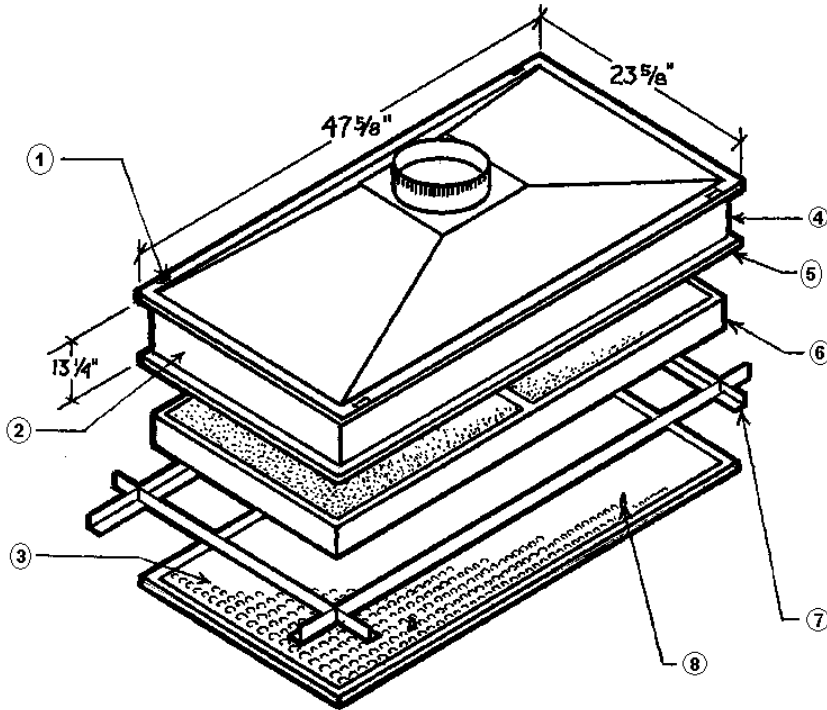
E-Mail: Info@Halco-Products.com

Website: www.Halco-Products.com

HALCO
PRODUCT
INFORMATION

400.3001

Clean Room Ceiling Filter Modules



HEPA or ULPA Efficiency Modules

Room Side Replaceable

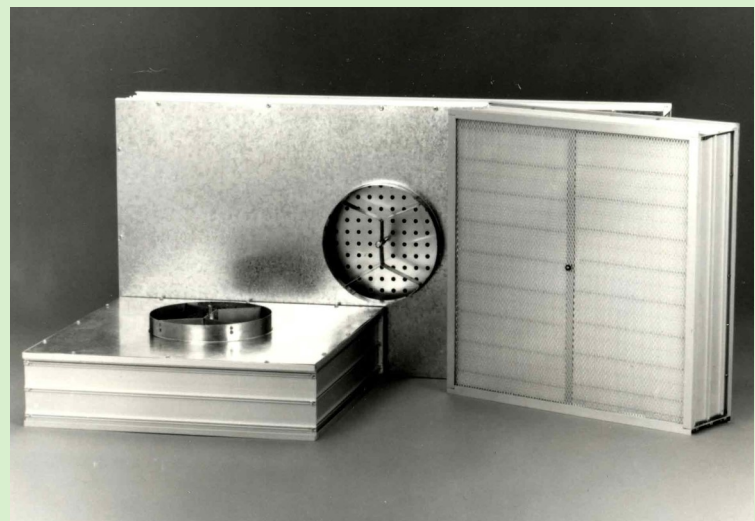
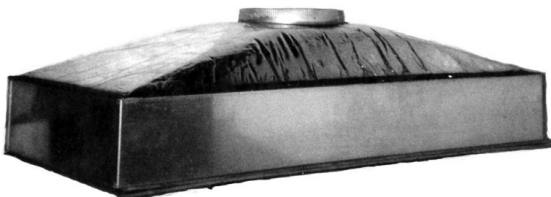
- Low profile design
- Integral discharge grille
- Replaceable core design
- Low operating costs
- Gasket or Gel seal
- Adjustable flow damper
- Insulation options
- Hanging tabs
- Optional sizes
- Pilot lights
- Static pressure sensor system

USES AND APPLICATIONS

- Laminar flow clean rooms
- Pharmaceutical and Biomed
- Medical devices
- Surgical suites
- Machinery filtration
- Food processing
- Microelectronics
- Nanotechnology

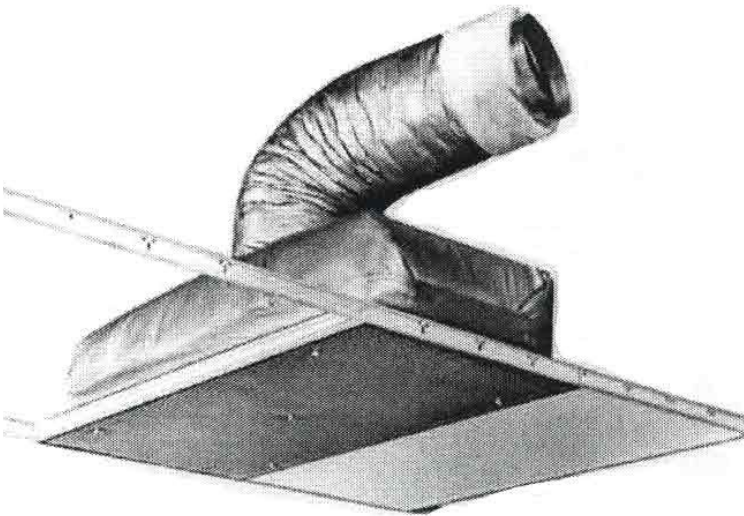
HEPA or ULPA Efficiency Modules

- Low profile design
- Integral discharge grille
- Low operating costs
- Adjustable flow damper
- Insulation options
- Hanging tabs
- Optional sizes
- Economical design



VERTI-FLO

(Replaceable filter ceiling module)



The **VERTI-FLO** Ceiling module is a unique self contained filtering and Clean Air distributing system. Designed to fit into standard 2' x 4' "T-grid" ceiling channels. The unit arrives on site ready for installation. Factory sealed within a heavy duty white fiberglass housing is a replaceable pretested HEPA filter. Rated to be 99.97% efficient on particles of 0.3 microns in size and larger.

Air is supplied to each unit through a flexible duct from a central air supply system. Built into the module is an adjustable damper. No special tools are required, just an ordinary screw driver to individually tune the total system into balance and provide uniform air distribution throughout the clean room. This adjustment allows for air flow to be regulated from each unit to accommodate areas of higher particulate concentration or obstructions within the room. It also allows for optimum performance per unit to insure uniform velocities throughout the life of the filter.

By removing the grille on the face of the unit and following simple instructions a new factory tested HEPA filter can be easily installed. Ease of Installation, maintenance and replaceable HEPA filter are the features offered by the VERTI-FLO unit.

Verti-Flo Air Filter module installed in standard 2' x 4' T-grid drop ceiling "T" with flexible air duct.

APPLICATIONS:

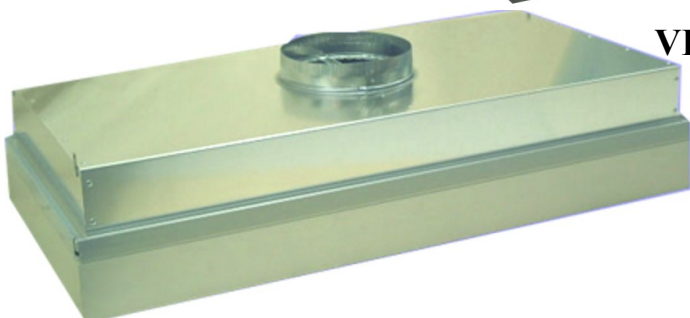
*Clean Rooms
Sterile Areas
Medical/Pharmaceutical
Packing, Assembling,
Mixing Sterile Products
Micro Production
Photographic Applications*



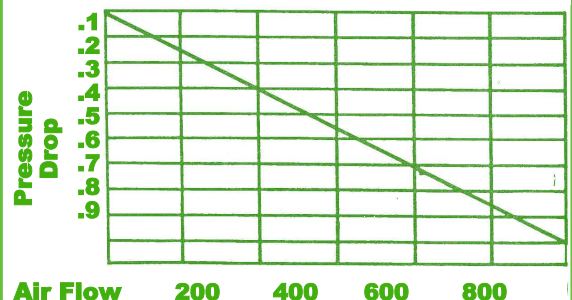
VF2424



VF2448



INITIAL RESISTANCE VS. AIR FLOW



T-MOD

(Disposable ceiling module)

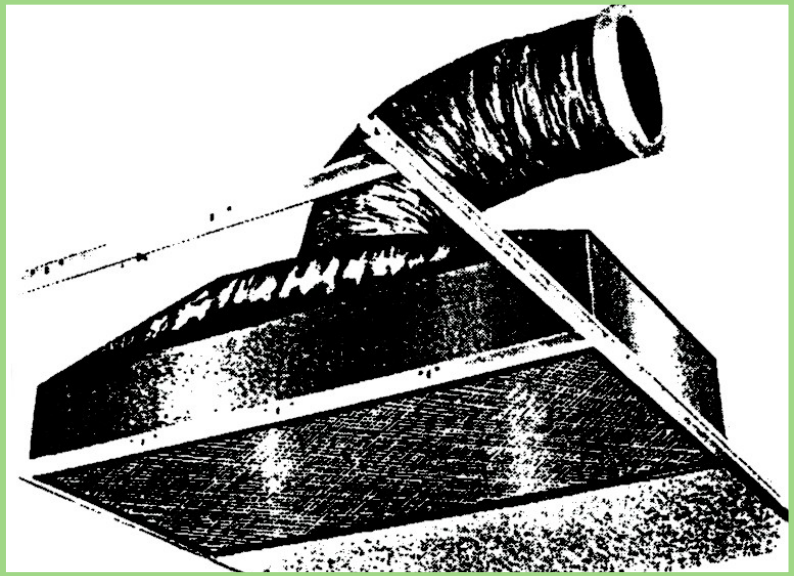


The "T-MOD" ceiling module is a self contained filtering and clean air distributing system. It drops into a standard 2' x 4' T-Grid ceiling. It's ready for installation when it arrives on site.

The "T-MOD" is an economical means to achieve the same results as the VERTIFLO unit. It utilizes the same 99.97% efficient filter on particles of 0.3 micron size and larger. Air is supplied to the units in the same way and hook up to a central air supply is identical. "T-MODS" are individually factory tested before shipment. However the filter in the "T-MOD" is not replaceable since the filter frame is an integral part of the housing. Once the filter needs replacement the entire unit, including housing is disposed of and replaced with a new "T-MOD" unit.

"T-MOD" retains the same built in adjustable damper as the VERTI-FLO, is adjusted in the same manner with the same tools and provides the same airflow. Average capacity is 800 CFM at .6" W.G. static pressure.

Ease of installation, maintenance and designed with economy in mind are the features offered with the "T-MOD" unit.



INSTALLATION

Installation is quick and easy. Factory tested units are shipped and ready for placement in a standard 2' x 4' grid ceiling. Once the flexible duct is connected to the air supply the unit is positioned and ready for operation.

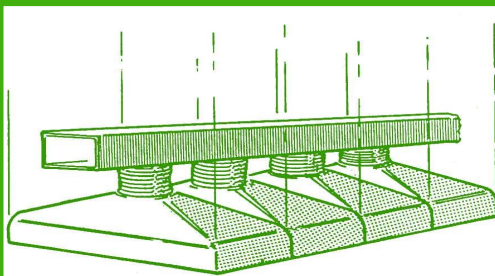
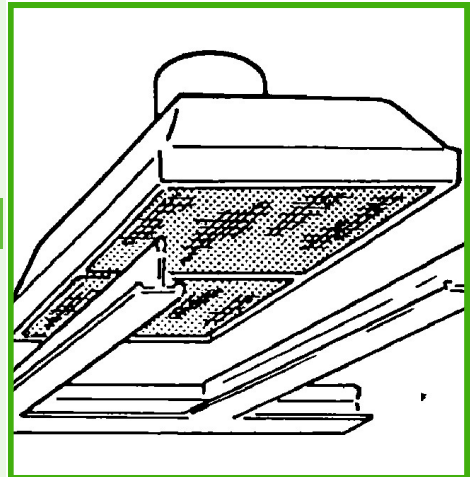
REPLACEMENT:

The face of each module is screened with anodized aluminum grille to protect the filter before, during and after installation. This grille work is permanently mounted on the "T-MOD" face since filter replacement is not necessary. An entirely new "T-MOD" module must be installed when filter replacement is required.

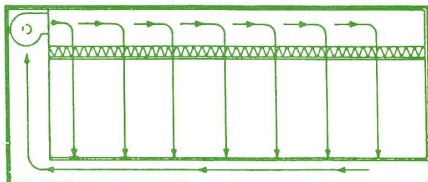
Higher efficiency rated filters also available, contact factory for prices.

TESTING AND ADJUSTMENT:

Testing and adjustment of airflow is accomplished through the center bar access screw to the damper above.

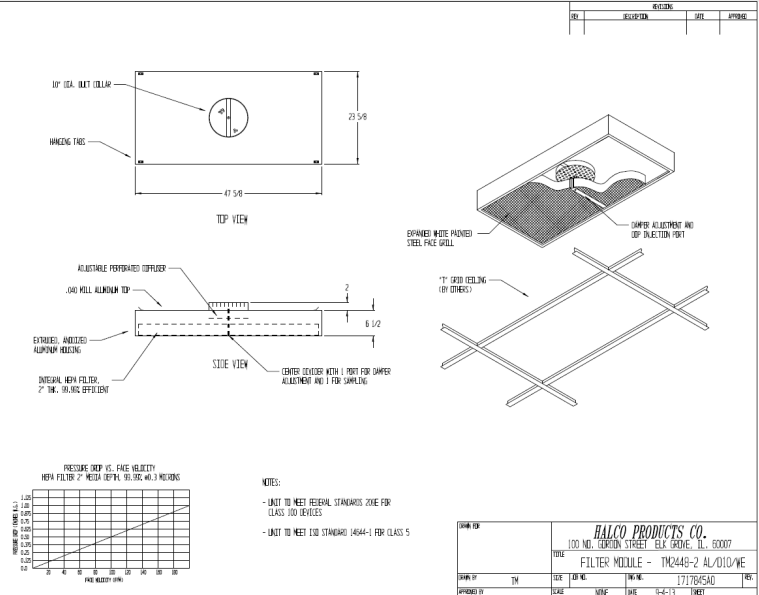
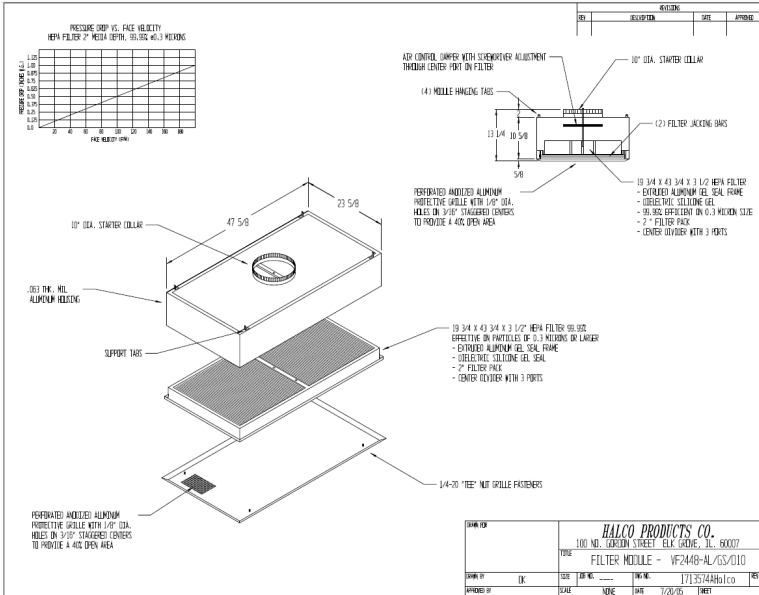


Point of Use In-Line Work Area



Vertical Laminar Flow (Floor Return)

SPECIFICATIONS



- HOUSING:**
- 14 GA. ALUMINUM
 - STAINLESS
- FILTER SIZE:**
- 24"x48"
 - 24"x24"
 - [CUSTOM]
- GRILL (Removable 18 Gauge)**
- PERF ALUM.
 - PERF. STAINLESS
 - [CUSTOM]
- DAMPER:**
- MANUALLY ADJUSTABLE
 - [NONE]
- FILTER (EFF%)**
- 99.97
 - 99.99
 - 99.999
 - ULPA
- SEAL**
- GASKET
 - GEL
- SEAL LOCATION**
- UPSTREAM
 - DOWNSTREAM
- INSULATION**
- NONE
 - 1/2"
 - 1"
- DUCT COLLAR**
- 8"
 - 10"
 - 12"
- STATIC SENSOR**
- ELECTRIC
 - PROBE ONLY

- HOUSING:**
- 14 GA. ALUMINUM
 - STAINLESS
- FILTER SIZE:**
- 24"x48"
 - 24" x 24"
 - [CUSTOM]
- GRILL (Removable 18 Gauge)**
- PERF ALUM.
 - PERF. STAINLESS
 - [CUSTOM]
- DAMPER:**
- MANUALLY ADJUSTABLE
 - [NONE]
- FILTER**
- (EFF%)
 - 99.97
 - 99.99
 - 99.999
 - ULPA
- INSULATION**
- NONE
 - 1/2"
 - 1"
- DUCT COLLAR**
- 8"
 - 10"
 - 12"
- STATIC SENSOR**
- ELECTRIC
 - PROBE ONLY



HALCO PRODUCTS COMPANY

100 N. Gordon Street - Elk Grove Village, IL 60007-1193
 Tel: 847-956-1600 - Fax: 847-956-0595
 E-Mail: Info@Halco-Products.com
 Website: www.Halco-Products.com